

ASU[®] EdPlus
Arizona State University

Ahmed Ali
Director, International Digital Enrollment
ahmed.k.ali@asu.edu

ASU Facts

Public research university

- 140,000 students (2019)
- 75,000 on-campus
- 65,000 online

250+ Online degree programs and certificates

- 131 Undergraduate Programs
- 112 Graduate
- 38 Certificate Programs

400+ 'prestigious faculty'

National Academies-honored faculty

Accreditation & Recognition

Accredited by the Higher Learning Commission of the North Central Association of Colleges and Schools.

Specialized Accreditation are applied to specific fields (AACSB, ABET etc.).

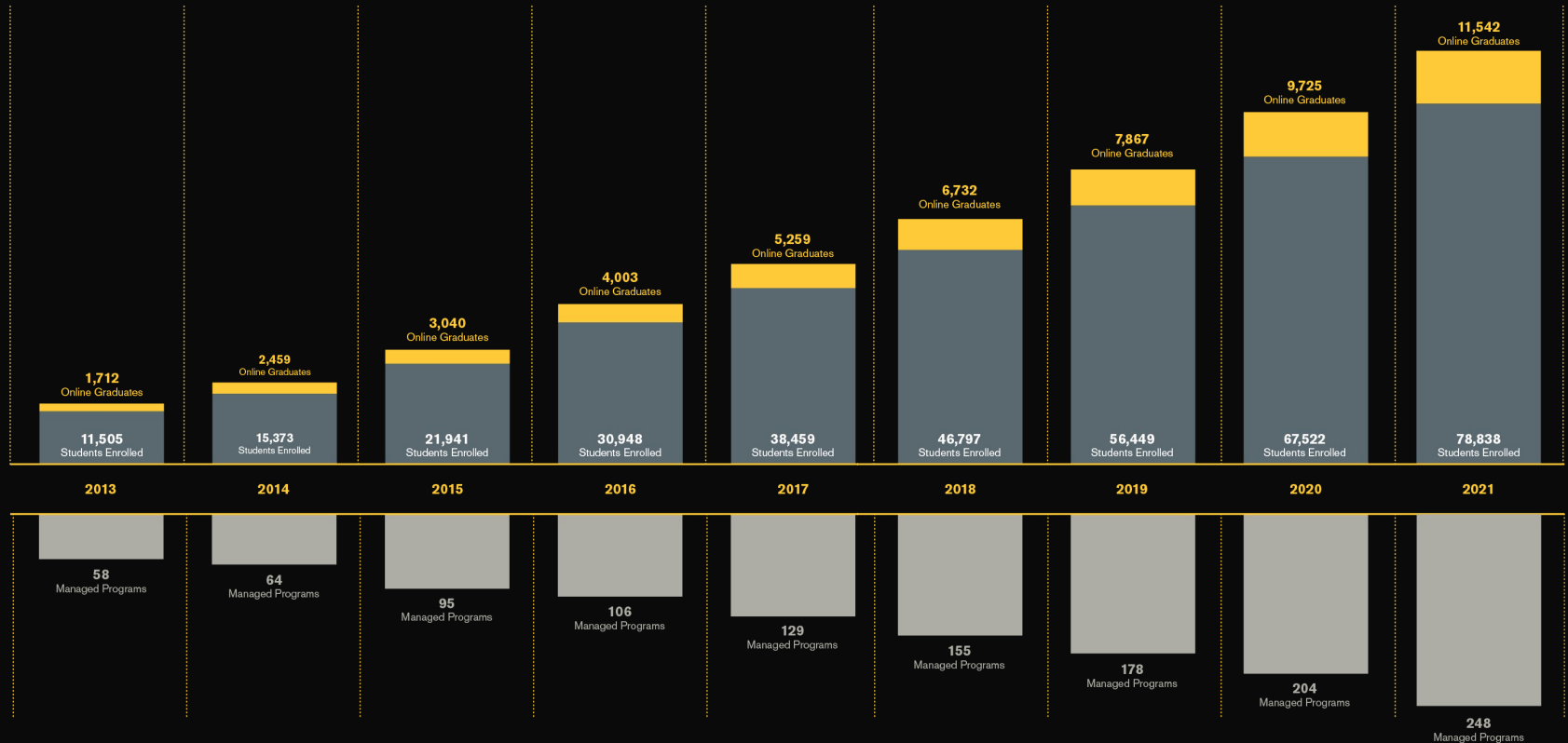
530,000+ alumni

Leading, shaping, changing our world

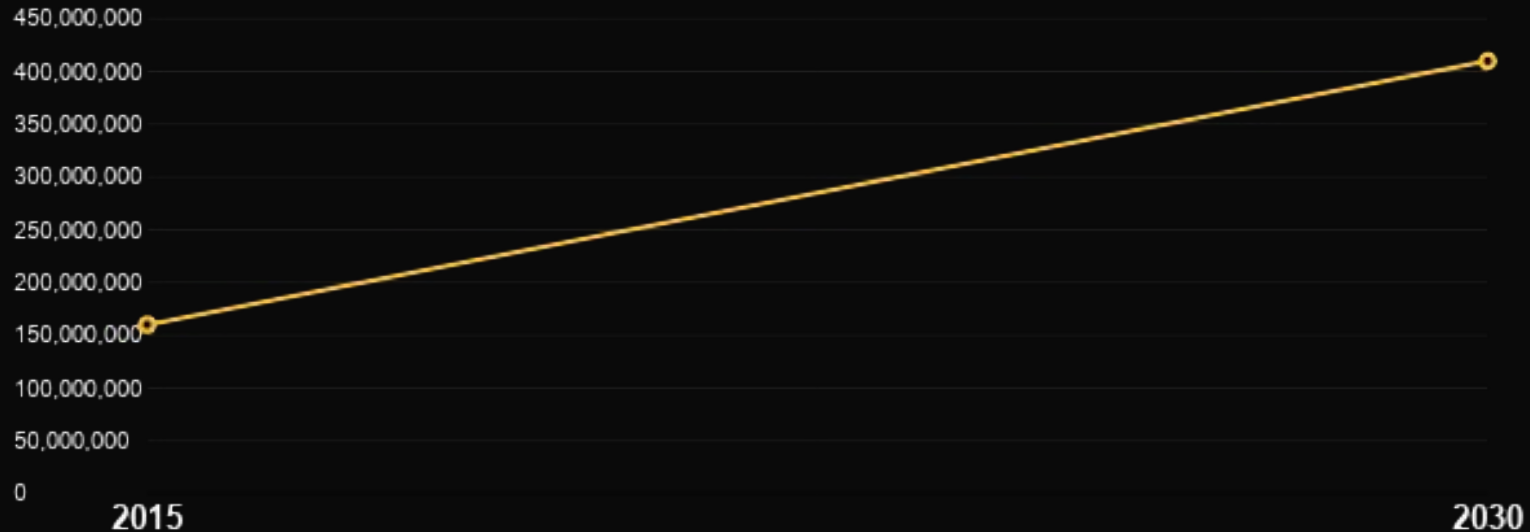
Top 10
university
in the U.S.
chosen by
international
students

— Institute of International
Education, 2020

Students and Online Programs



The demand for higher education will grow from **160,000,000 to 410,000,000***



To meet that demand the world would have to build **4 universities** that each serve 80,000 students, **every week, every year, for 15 years.**

Challenges to Online Learning

Lack of personal interaction

Students lack personal connections to each other, faculty, and the university

Modality separation

Universities segregate between campus and online, which nurtures the stereotype that online is of lesser quality than in-person

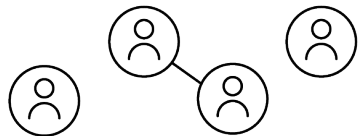
Prevalence of cheating

A lack of tools in online courses makes cheating easier or more accessible and lowers the academic integrity of a course

Lack of recognition and advocacy

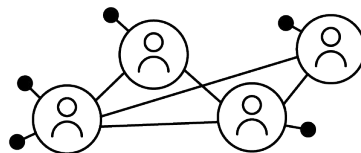
Governments do not see online programs as desirable as on-ground programs and do not advocate for them

ASU's Current Solutions



Lack of personal interaction

Students lack personal connections to each other, faculty, and the university



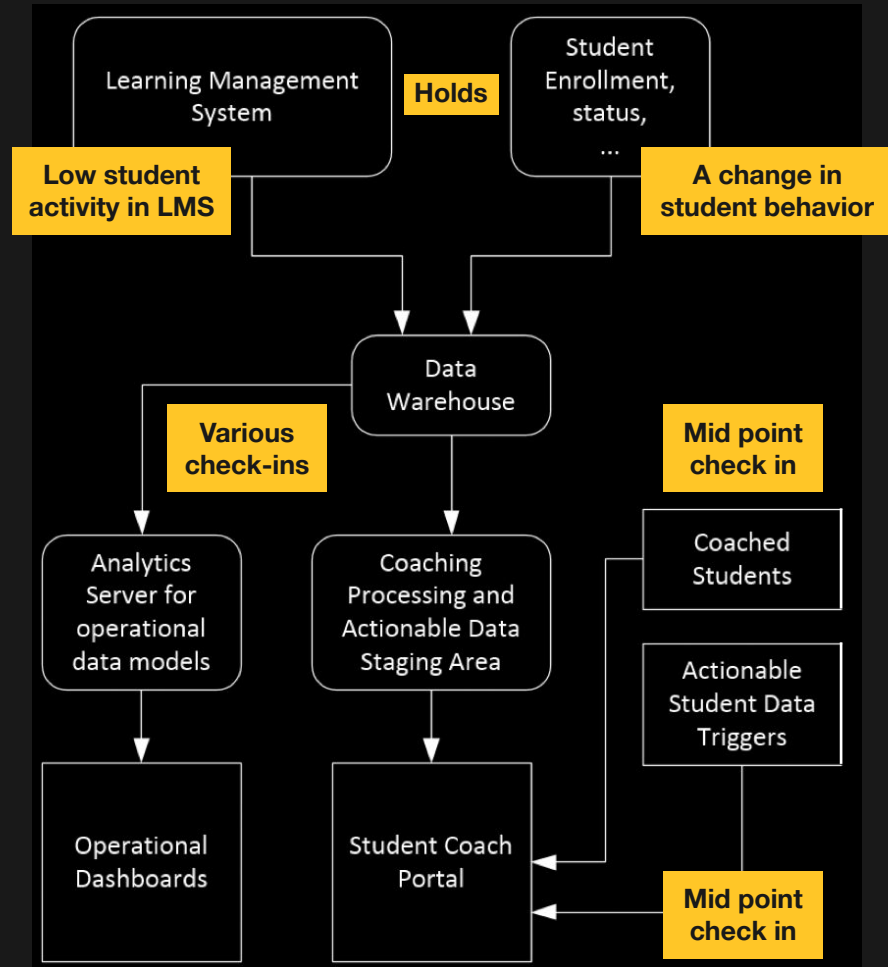
Technology-driven solutions

- Discussion boards for peer and instructor interaction
- Virtual tools and simulations such as labs and digital experience coaching
- Personal success coaches for student support and retention

Success Coach Outreach

Success Coaches are committed to guiding students through their educational journey, from the day they start until the day they graduate. Coaches have a strong understanding of each student's academic program as well as the university support services available to students. Risk factors have been identified and coaches effectively intervene at critical points in the student's academic journey.

We assess risk factors to equip coaches to know when and how to intervene to help students succeed in their courses and complete their degree.



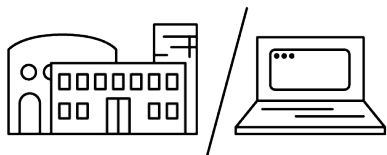


IMMERSIVE LEARNING IN THE ALIEN ZOO

NEO BIO: A NEW APPROACH TO INTRODUCTORY BIOLOGY

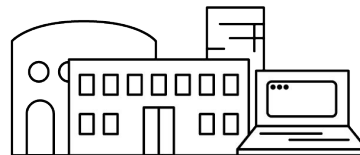


ASU's Current Solutions



Modality separation

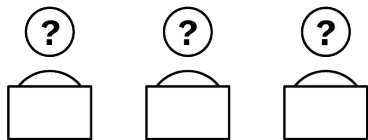
Universities segregate between campus and online, which nurtures the stereotype that online is of lesser quality than in-person



Modality integration

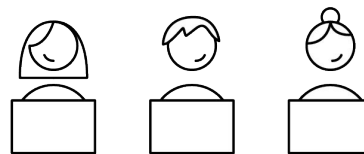
- At ASU students receive the same diplomas, transcripts, faculty, credits and content
- Online courses model rigor that parallels or exceeds in-person with quality content and course design

ASU's Current Solutions



Prevalence of cheating

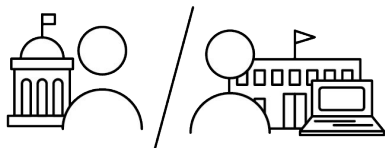
A lack of tools in online courses makes cheating easier or more accessible and lowers the academic integrity of a course



Getting ahead of cheating

- Addition of proctoring software
- Anti-plagiarism software monitoring assignments as they're turned in
- Various biometric tools help with identifying students
- Keystroke analysis software identifies movement and patterns

ASU's Current Solutions



Lack of recognition and advocacy

Governments do not see online programs as desirable as on-ground programs and do not advocate for them



Continued involvement

- Continue to work with governments across the region to assure and demonstrate quality in online learning
- Examples for excellence could include pilot programs such as the OLSP by AGFE & ASU



As of FY20, the Open Learning Scholars Program has awarded **550 scholarships** to students from 19 different Arab countries.

The Abdulla Al Ghurair Foundation for Education (AGFE) is committed to reaching over 15,000 promising Arab youth from across the Arab World over the next ten years. The Foundation is focused on creating new and exciting opportunities to activate their untapped potential, allowing them to rewrite their future.



Thank you



Ahmed Ali
Director, International Digital Enrollment
ahmed.k.ali@asu.edu