



# Higher Education in Dubai

KNOWLEDGE & HUMAN DEVELOPMENT AUTHORITY (KHDA)

# People of Dubai



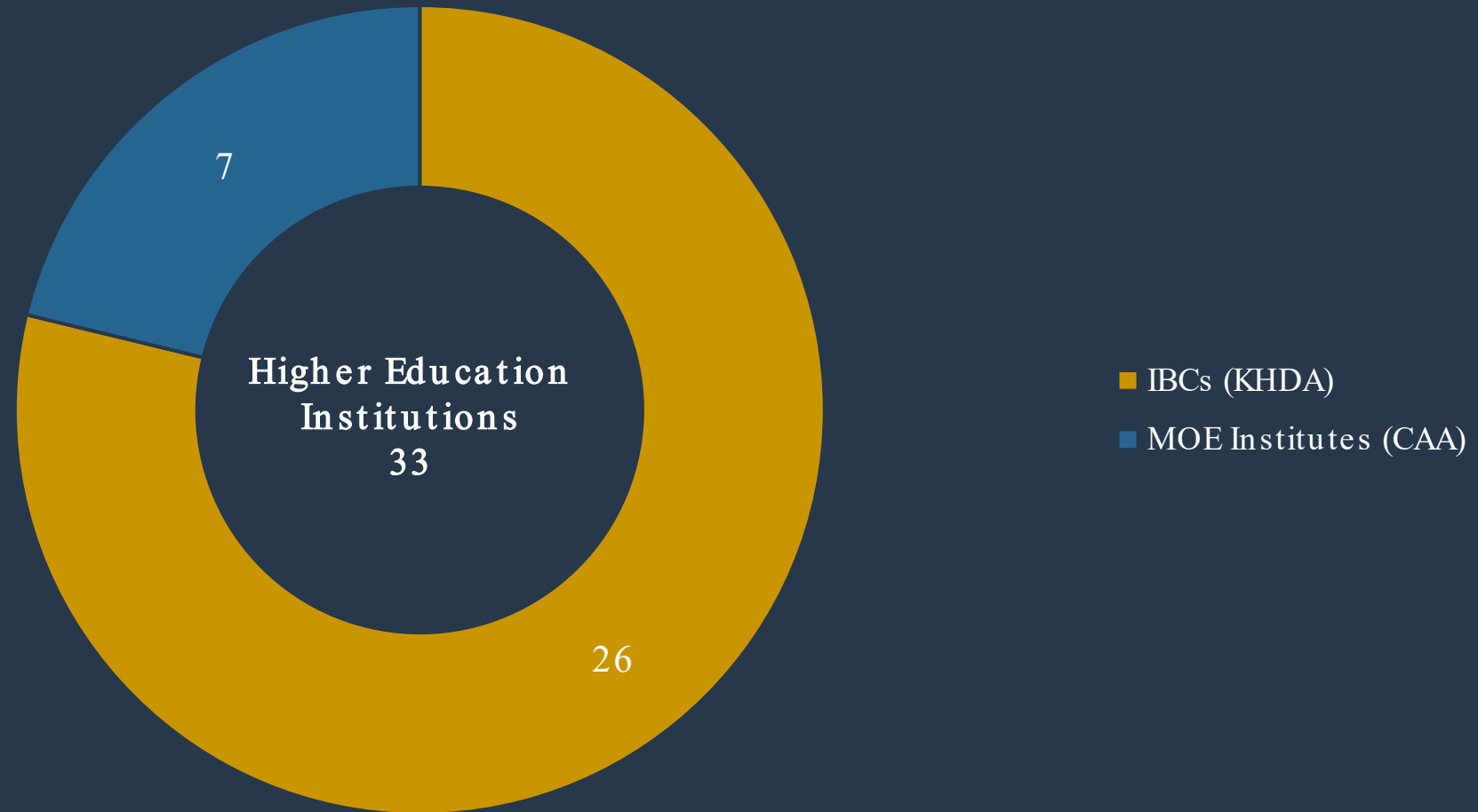
- Over 200 nationalities
- 90% expatriate
- Over 40% increase in Dubai population to 3.33 million, and UAE to 9.77 million.
- Very young population\*

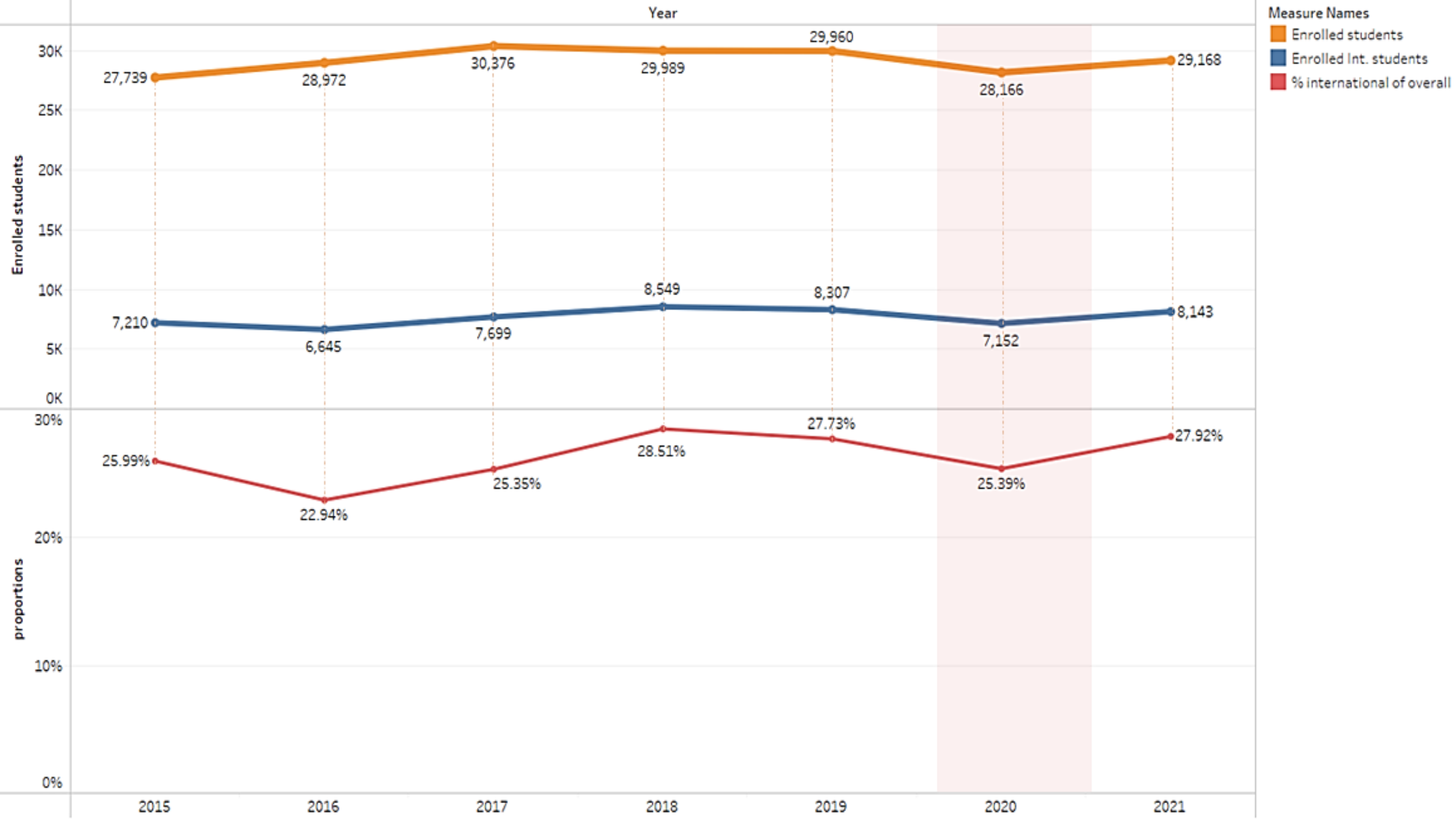
*\*Dubai Statistics Center and World Bank*



More than third of the world population have access to Dubai within an a maximum of 8 hours flight

# Higher Education Landscape in Dubai Free Zones





# The University Quality Assurance International Board (UQAIB)

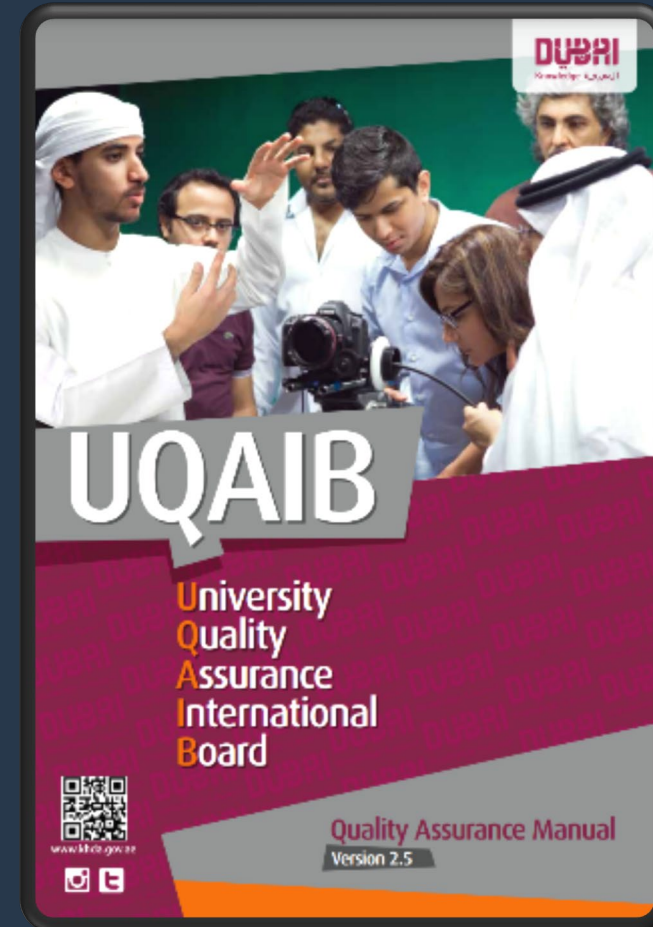
International Advisory Board

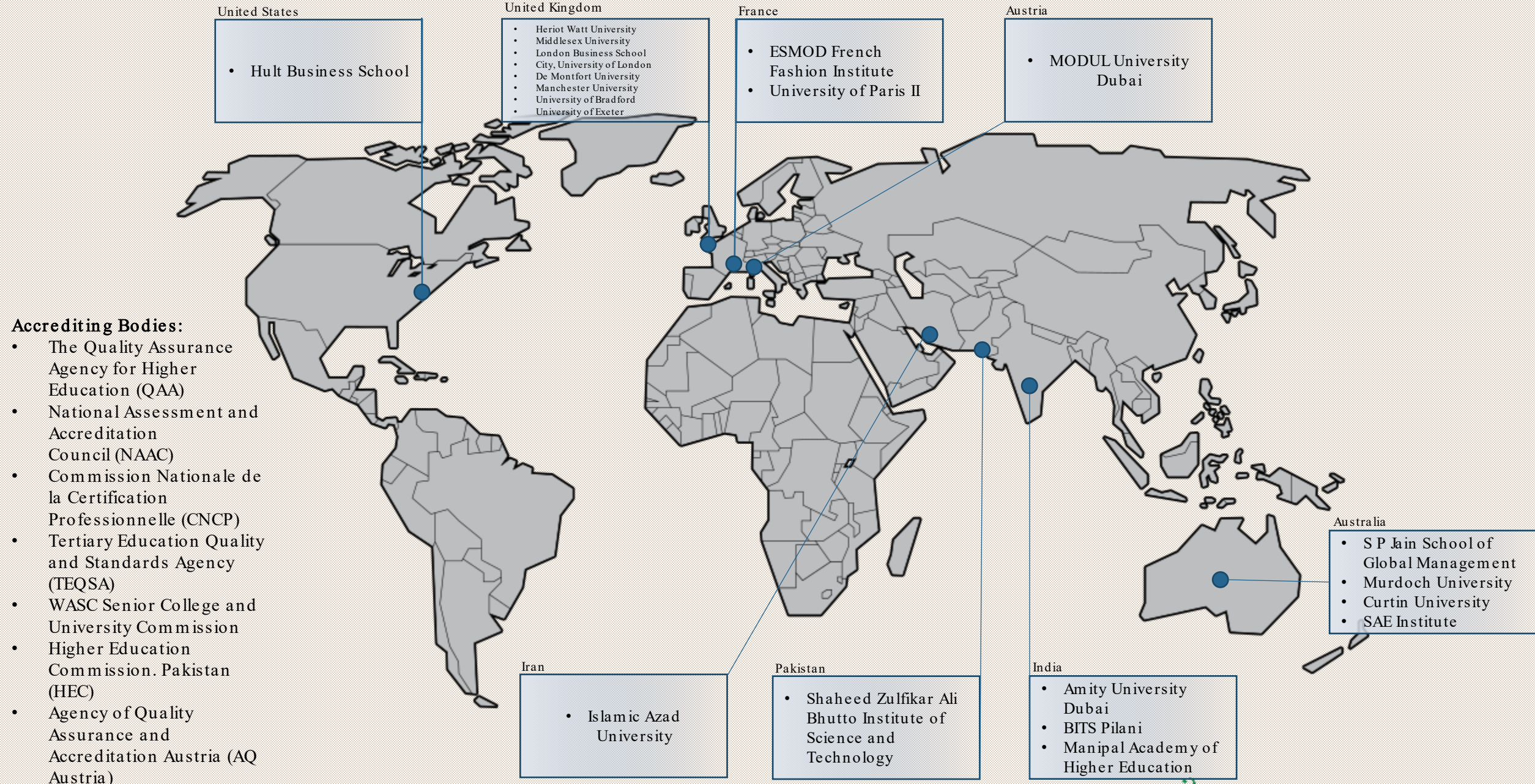
Validation model

Builds on the home external quality assurance

Focusses on transnational quality assurance arrangements between home and branch

Published various good practice guides to support institutions





**Accrediting Bodies:**

- The Quality Assurance Agency for Higher Education (QAA)
- National Assessment and Accreditation Council (NAAC)
- Commission Nationale de la Certification Professionnelle (CNCP)
- Tertiary Education Quality and Standards Agency (TEQSA)
- WASC Senior College and University Commission
- Higher Education Commission. Pakistan (HEC)
- Agency of Quality Assurance and Accreditation Austria (AQ Austria)



QAA



NAAC



TEQSA

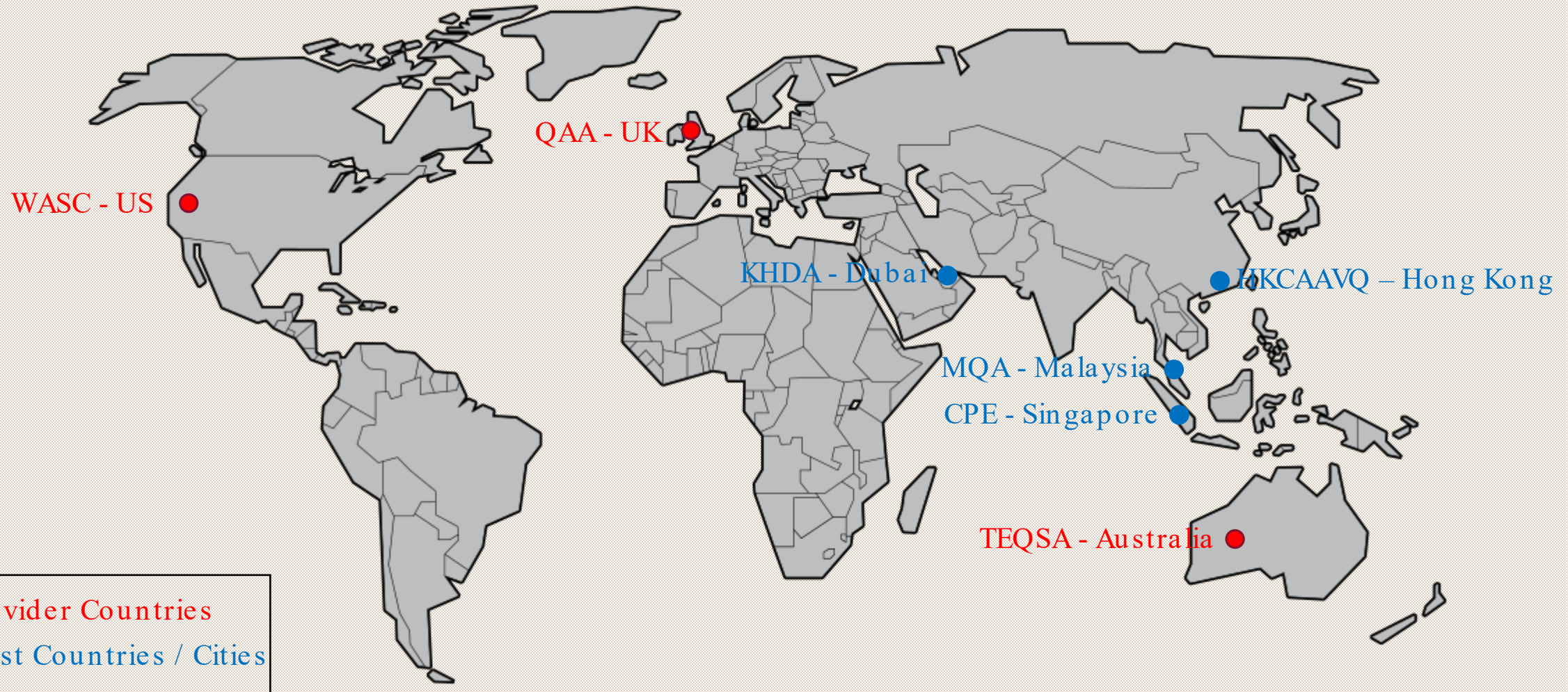


# QBBG - Quality Beyond Boundaries

A trusting alliance of international quality assurance agencies implementing a collaborative and innovative future for transnational quality assurance to ensure that today's global students are tomorrow's global citizens







# QBBG Projects

- Student Engagement (2018-19)
- Academic Integrity (2018-19)
- Quality Assurance of Online Education (2018-19)
- Happiness and Positivity in Higher Education (2018)
- Quality Assurance and student mobility in Global campuses (2017)
- Comparative Assessment of Quality Assurance Agencies (2016)

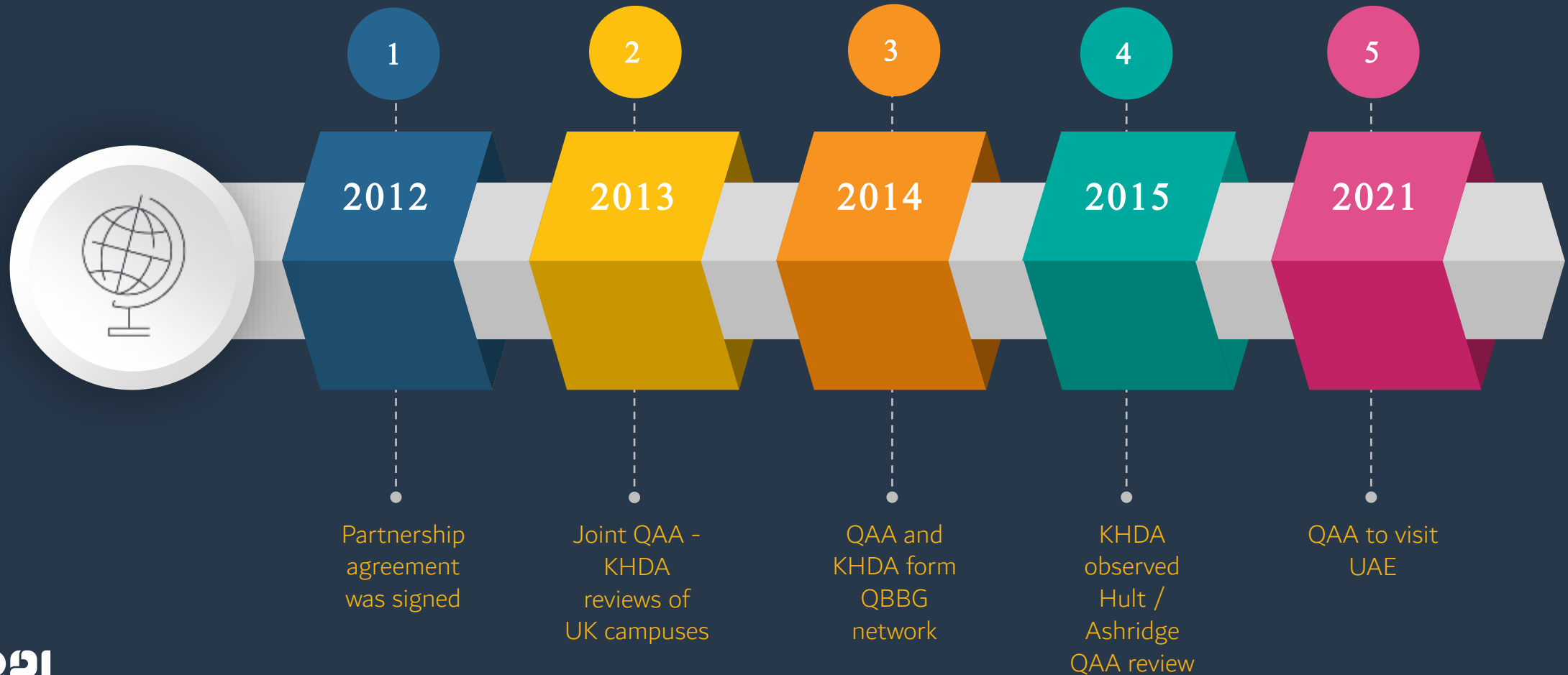




# KHDA Partnership with QAA



# KHDA Partnership with QAA



# Higher Education Classification

The second annual Higher Education Classification (HEC) gives students and their parents the information and data they need to make more confident decisions about their future. Branch campuses are also able to use the HEC to identify and showcase their strengths and international best practices.

The HEC has been developed in partnership with QS Quacquarelli Symonds and adapted to meet the needs of branch campuses in Dubai.



# Higher Education Classification



A robust rating framework that will enable institutions to showcase their strengths



Provide students and parents with relevant data to make informed choices

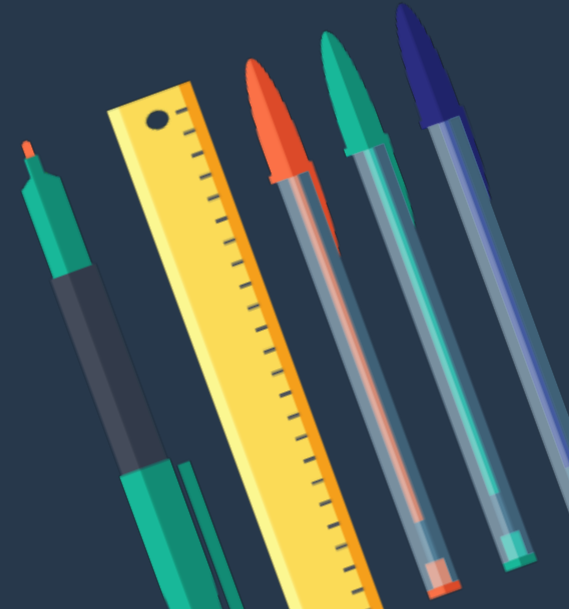


A policy instrument for decision makers

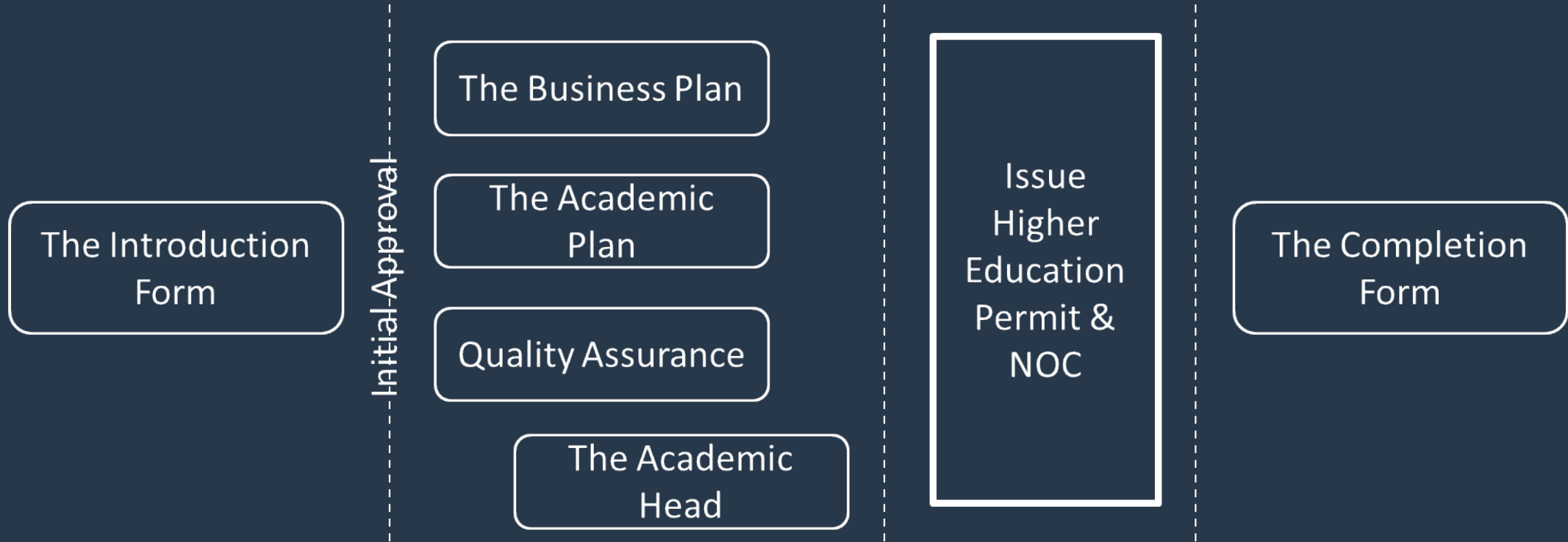




# Establishing a Higher Education Branch



# Current Process







## KNOWLEDGE & HUMAN DEVELOPMENT AUTHORITY

Block 8, Academic City, P. O. Box: 500008, Dubai, UAE

Tel.: +971 4 364 0000 Fax.: +971 4 364 0001

[www.khda.gov.ae](http://www.khda.gov.ae)

